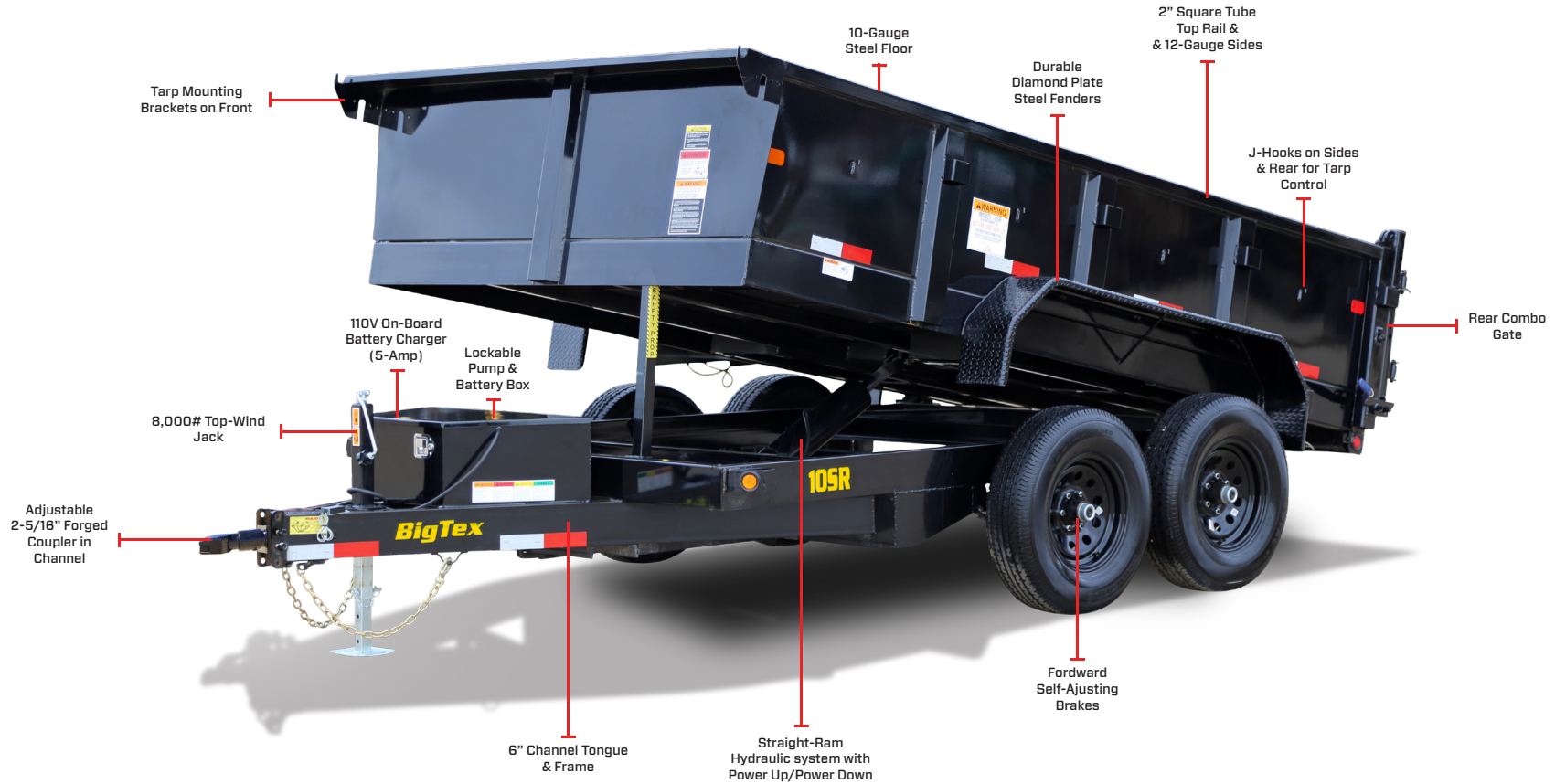


10SR / 12SR

PRO SERIES TANDEM AXLE SINGLE RAM DUMP TRAILER

BigTex TRAILERS

- GVWR: 9,990#
- LOAD CAPACITY: 6,660#
- AVAILABLE LENGTH: 12'
- BED WIDTH: 83" WIDE
- COUPLER: Bumper Pull
- CARGO CAPACITY: 6.1 yd³
- DUMP ANGLE: 43°
- DUMP SIDE HEIGHT: 24"
- AXLES: Tandem (2 x 5,200# (10SR) or 2 x 6,000# (12SR))
- DECK HEIGHT: 10SR: 31-3/4, 12SR: 33-3/16"



RESILIENT 10-GAUGE STEEL FLOOR

The robust 10-gauge steel floor is built to withstand tough conditions, ensuring durability and long-lasting performance for your trailer over time.



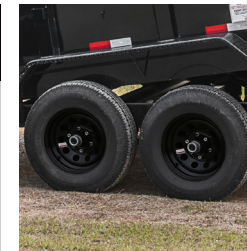
STRENGTH & VERSATILITY

As the 10SR & 12SR have a 2" square tubing top rail for added strength, to complement the stakepockets for added cargo control and ability to support after-market side extensions.



MULTI-FUNCTION REAR COMBO GATE

The Rear Combo Gate, featuring both barn doors and a spreader gate, simplifies loading, unloading, and spreading, providing exceptional flexibility for various applications.



EFFORTLESS MAINTENANCE

Our forward self-adjusting brakes make brake maintenance a breeze. The system automatically adjusts the brake shoes as they wear down, eliminating the need for manual adjustments.